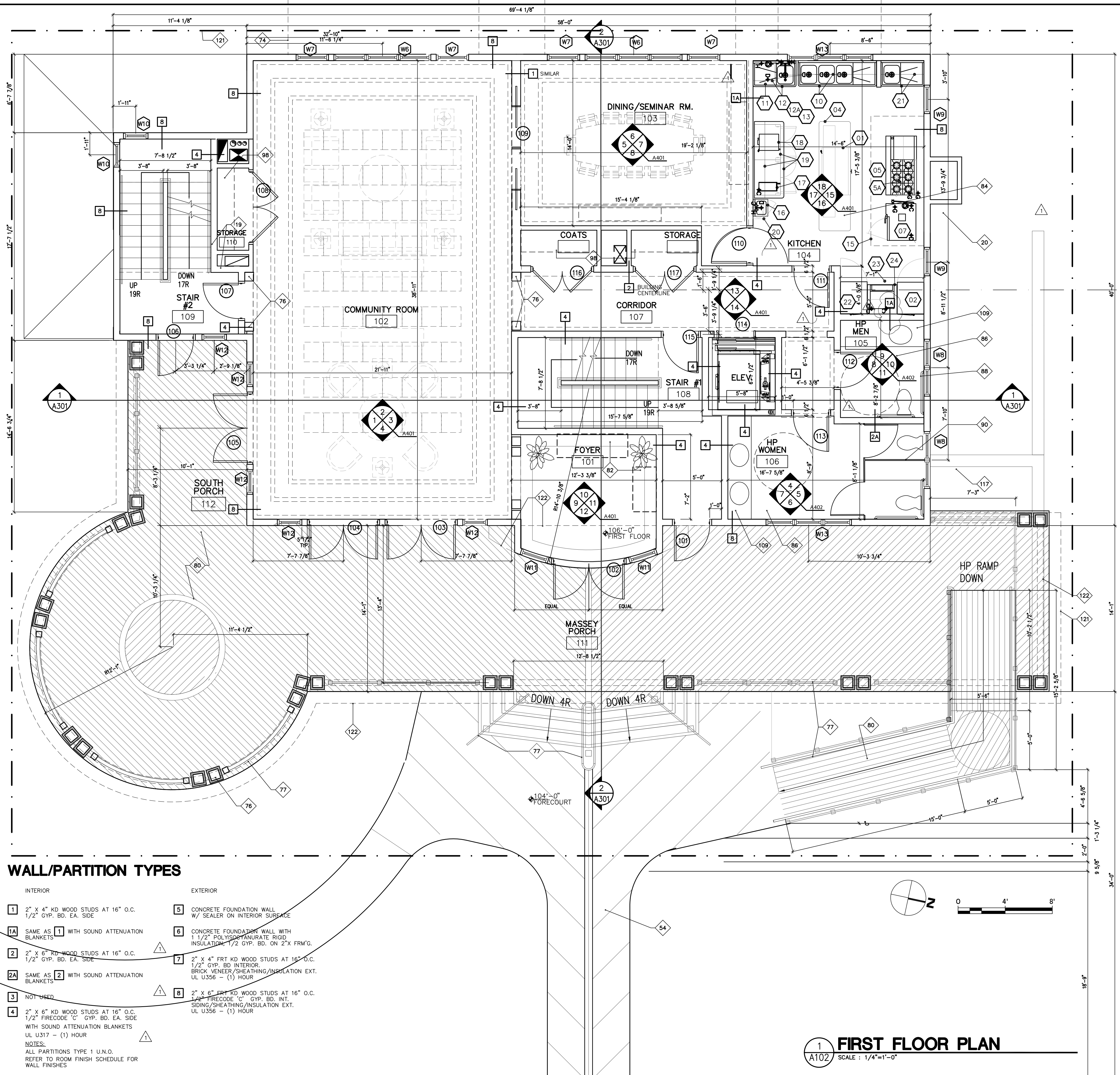


KEYNOTES

1. 2x4 KD WD STUD @ 16" O.C.
2. 2x6 KD WD STUD @ 16" O.C.
3. 2x8 KD WD STUD @ 16" O.C.
4. 2X KD WD FRAMING
5. 1 X 3 WOOD STRAPPING @ 16" O.C.
6. PRESSURE TREATED 2X FRAMING
7. 2X RAFTER
8. WOOD 1-JOIST
9. MULTIPLE LVL BEAM/HEADER
10. GANGNAILED ROOF TRUSS ENGINEERED BY MANUF.
11. BEARING WALL
12. 1/2" PLYWOOD SHEATHING
13. 3/4" T&G PLYWOOD DECKING
14. 1/2" MDO SHEATHING
15. 1/2" DENSEGLAS GOLD EXT. SHEATHING
16. 1/2" GWB
17. 1/2" GWB, TYPE C FIRECODE, INSTALLED PER UL ASSEMBLY REQ.
18. 5/8" GWB, TYPE X FIRECODE, INSTALLED PER UL ASSEMBLY REQ.
19. 1-HOUR RATED ASSEMBLY, UL #J317
20. 2-HOUR RATED ASSEMBLY, UL #1301
21. 1 HOUR RATED FLOOR/CEILING ASSMBLY, UL #L570.
22. FIRE RATED DOOR WITH CLOSER
23. TILE BACKER BOARD
24. 3/4" EXTERIOR GRADE PLYWOOD
25. 3/4" FIRE RETARDANT TREATED PLYWOOD
- 26.
27. R-13 FIBERGLASS BATT INSULATION WITH 6 MIL POLY VAPOR BARRIER & TAPED SEAMS
28. R-19 FIBERGLASS BATT INSULATION WITH 6 MIL POLY VAPOR BARRIER & TAPED SEAMS
29. R-30 FIBERGLASS BATT INSULATION WITH 6 MIL POLY VAPOR BARRIER & TAPED SEAMS
30. 1 1/2" RIGID INSULATION
31. 2" RIGID INSULATION
32. 3" NOM. RIGID INSULATION (R-20)
33. POLYSTYRENE FOUNDATION INSULATION
34. CONTINUOUS 6 MIL POLYETHYLENE VAPOR BARRIER WITH TAPED SEAMS.
35. HARDI OR APPROVED EQUAL 4" TO WEATHER FIBER CEMENT CLAPBOARD SIDING.
36. HARDI OR APPROVED EQUAL 4" TO WEATHER SCALLOPPED FIBER CEMENT CLAPBOARD SIDING.
37. HARDI OR APPROVED EQUAL 3/4" ACTUAL FIBER CEMENT CLAPBOARD TRIM.
38. HARDI OR APPROVED EQUAL 1" ACTUAL FIBER CEMENT CLAPBOARD TRIM.
39. ROWLOCK BRICK COURSE.
40. HARDI OR APPROVED EQUAL FIBER CEMENT CROWN MOULDING.
41. HARDI OR APPROVED EQUAL FIBER CEMENT BED MOULDING.
42. SHEET WATERPROOFING, SEE SPEC.
43. BITUMINOUS DAMPPROOFING
44. ENGINEERED FILL AND COMPACTED GRAVEL
45. REINFORCED CONCRETE FOOTING AND FOUNDATION.
46. REINFORCED CONCRETE PIER
47. 8" ANCHOR BOLT
48. EXPANDED POLYURETHANE FOAM SILL SEALER
49. INTERIOR CONCRETE SLAB WITH WWF OR FIBERMESH REINF.
50. 6X6 P.T. POST
51. PERIMETER DRAIN
52. FINISH GRADE
53. CURBS AND SIDEWALK, CAST IN PLACE BROOM FINISH CONCRETE.
54. CONCRETE SIDEWALK WITH JOINTS IN PATTERN AS SHOWN.
55. COMPRESSIBLE FILLER
56. MASONRY VENEER, FACE BRICK TO MATCH FIREHOUSE BUILDING, FLEMISH BOND WITH 8" SOLDIER COURSE BELOW, ROWLOCK COURSE AS SHOWN ON BUILDING ELEVATIONS
57. AIR SPACE
58. THROUGH-WALL FLASHING
59. GALV. WALL TIES.
60. WATERPROOFING MEMBRANE
61. ICE AND WATER SHIELD OR APPROVED EQUAL - FULL COVERAGE
62. STANDING SEAM METAL ROOF, PAC-CLAD PREFINISHED 22 GA. GALV. STEEL WITH KYNAR 500 FINISH
- 62A. 40 YEAR ARCHITECTURAL GRADE ASPHALT SHINGLE ROOFING
63. ALUMINUM LOUVER WITH INSECT SCREEN
64. 1 1/2" MIDGET LOUVERS @ 48" O.C.
65. 5" DIAM. 1/2 ROUND COPPER GUTTER AND DOWNSPOUTS. PROVIDE ALT. PRICE FOR 5" HALF ROUND PREFIN. ALUM.
66. SNOW GUARDS TO MATCH ROOF.
67. COPPER CHIMNEY CAP. SUBMIT ALTERNATE FOR PREFINISHED ALUM. COORD. WITH KITCHEN EXHAUST FAN REQUIREMENTS.
68. ALUM. DRIP EDGE TO MATCH ROOF
69. PREFINISHED ALUM. FLASHING TO MATCH ADJACENT MATERIAL COLOR.
70. 1/2 ROUND 5" COPPER GUTTER. SEE ALTERNATES.
71. LIGHTNING PROTECTION SYSTEM. SEE ALTERNATES.
72. PAINTED BEADBOARD SOFFIT
- 72A. PAINTED HARDIPLANK SOFFIT
73. WINDOW-SEE ELEVATIONS AND SCHEDULES
74. SUN SCREEN - SEE DETAILS.
75. SYNTHETIC WOOD OR PAINTED DOUGLAS FIR BRACKET
76. TURNCRATT OR APPROVED EQUAL TO MATCH CLASSIC SQUARE COLUMN
77. PAINTED CEDAR RAILING SYSTEM, SEE DETAILS.
78. 1" LINEAR CEDAR LATTICE, ORIENTED AS SHOWN.
79. PRESSURE TREATED FRAMING
80. 5/4" NOM. X 6 MAHOAGANT DECKING WITH CLEAR SEALER, LAID AS SHOWN WITH 3" FLAT PERIMETER BORDER. PROVIDE ALT. PRICES FOR JARRAH WOOD AND TREX OR EQUAL.
81. SEALANT AND BACKER ROD. COLOR TO MATCH ADJACENT DOMINANT MATERIAL.
82. FURNITURE BY OWNER
83. MILLWORK BY G.C.
84. EQUIPMENT BY OWNER, GC TO PROVIDE UTILITIES AND INSTALLATION
85. EQUIPMENT BY OWNER, NIC
86. PLUMBING FIXTURES AND SPECIALTIES BY GC BY BOBRICK OR APPROVED EQUAL, SATIN STAINLESS. PIPING AND CHASES TO BE INSULATED.
87. MECHANICAL SYSTEM BY GC. SEE BID FORM.
88. GRAB BAR
89. TWO-TIER ADA DRINKING FOUNTAIN, HALSEY TAYLOR OR APPROVED EQUAL.
90. BAKED ENAMEL TOILET PARTITION
91. SATIN BRASS FINISH HARDWARE, TYP.
92. 2X2 METAL ACCESS PANEL, PAINTED TO MATCH ADJACENT SURFACE
93. 2-HOUR RATED WELDED EXHAUST FLUE
94. 1" THICKNESS SHELING ON SPIR HARDWARE.
95. FOLDING PARTITION - SEE DOOR SCHEDULE AND SPECIFICATIONS
- 95A. TRACK FOR PARTITION - CONNECT STRUCTURE ABOVE
96. J-BEAD AND SEALANT
97. WOOD BLOCKING/RAILER
98. 1" THICKNESS P. LAM. SHELF AND METAL CLOSET POLE. SUPPORT AS REQ'D.
99. 1" HDWD. SCOTIA MOULDING. PAINTED.
100. CROWN MOULDING. PAINTED. COPE INSIDE CORNERS AND DIAG. BUTT JOINTS.
101. APRON MOULDING.
102. 1X4 HDWD. TRIM. PAINTED.
103. 1X6 HDWD. TRIM. PAINTED.
104. 1/2 X 4 HDWD. TRIM. PAINTED.
105. 3/4 X 6 HDWD. TRIM. PAINTED.
106. 5/4 HDWD. STOOL WITH FULL BULLNOSE. PAINTED
107. COVE WITH LIGHTING
108. CEILING COFFER
109. 3 CM GRANITE COUNTERTOP WITH FULL BULLNOSE AND BACKSPLASH
110. PL. LAMINATE COUNTERTOP AND BACKSPLASH
111. VINYL WALLCOVERING - SEE FINISH SCHEDULE
112. FINISH FLOORING - SEE FINISH SCHEDULE
113. LOAM AND SEED
114. LANDSCAPING BY G.C.-SEE ALLOWANCES
115. COMPACTED FILL IN 8" LIFTS.
116. CONCRETE RETAINING WALL WITH APPLIED WATERPROOFING.
117. 200 GALLON REINFORCED PLASTIC CISTERN TANK
118. ASPHALT PAVING TO BE REMOVED.
119. 3" THICK BLUESTONE CAP
121. PROPERTY LINE
122. LINE OF ELEMENT ABOVE (DASHED)
123. LINE OF ELEMENT BELOW (DASHED)
124. OPEN TO BELOW
125. TREES TO REMAIN
126. COPPER GUTTER CHAIN
127. SERVICE SINK
128. ROOF CRICKET
129. UPLIGHT-SEE ALLOWANCES
130. DOWNSPOUT
131. SANITARY
132. 2" WATER SERVICE
133. 6" FIRE SERVICE WITH BACKFLOW PREVENTER
134. UNDERGROUND ELECTRIC SERVICE. ELIM. POLE.
135. STORM WATER
136. WOOD STRINGERS, TREADS, RISERS
137. PAINTED HANDRAIL
138. WEEP HOLES @24" O.C.
139. SOLAR COLLECTORS (N.C.)

WALL/PARTITION TYPES

- | | |
|------------------------------------------------------------------------------------------------------------------------------------------------------------------------------------------------------------------------------------------------------------------------------------------------------------------------------------------------------------------------------------------------------------------------|-----------------------------------------------------------------------------------------------------------------------------------------------------------------------------------------------------------------------------------------------------------------------------------------------------------------------------------------------------------------------------------------------------------------------------------------------------------------------|
| <p>INTERIOR</p> <p>1 2" x 4" KD WOOD STUDS AT 16" O.C. 1/2" GYP. BD. EA. SIDE</p> <p>1A SAME AS 1 WITH SOUND ATTENUATION BLANKETS</p> <p>2 2" x 6" KD WOOD STUDS AT 16" O.C. 1/2" GYP. BD. EA. SIDE</p> <p>2A SAME AS 2 WITH SOUND ATTENUATION BLANKETS</p> <p>3 NOT USED</p> <p>4 2" x 6" KD WOOD STUDS AT 16" O.C. 1/2" FIRECODE 'C' GYP. BD. EA. SIDE WITH SOUND ATTENUATION BLANKETS UL U317 - (1) HOUR</p> | <p>EXTERIOR</p> <p>5 CONCRETE FOUNDATION WALL W/ SEALER ON INTERIOR SURFACE</p> <p>6 CONCRETE FOUNDATION WALL WITH 1 1/2" POLYISOCYANURATE RIGID INSULATION, 1/2 GYP. BD. ON 2" FRM'G.</p> <p>7 2" x 4" FRM KD WOOD STUDS AT 16" O.C. 1/2" GYP. BD. INTERIOR. BRICK VENEER/SHEATHING/INSULATION EXT. UL U356 - (1) HOUR</p> <p>8 2" x 6" FRM KD WOOD STUDS AT 16" O.C. 1/2" FIRECODE 'C' GYP. BD. INT. SIDING/SHEATHING/INSULATION EXT. UL U356 - (1) HOUR</p> |
|------------------------------------------------------------------------------------------------------------------------------------------------------------------------------------------------------------------------------------------------------------------------------------------------------------------------------------------------------------------------------------------------------------------------|-----------------------------------------------------------------------------------------------------------------------------------------------------------------------------------------------------------------------------------------------------------------------------------------------------------------------------------------------------------------------------------------------------------------------------------------------------------------------|
- NOTES:
ALL PARTITIONS TYPE 1 U.N.O.
REFER TO ROOM FINISH SCHEDULE FOR WALL FINISHES



1 FIRST FLOOR PLAN
SCALE: 1/4"=1'-0"

Architect of Record:

SCHNEE ARCHITECTS
 339 AUBURN ST., NEWTON, MA 02458
 Tel: 617-630-1800
 Fax: 617-630-1999
 www.schnee.com

Engineer of Record:

Copyright 2007
 All Rights Reserved
 THIS DRAWING MAY NOT BE REPRODUCED, ELECTRONICALLY OR OTHERWISE, WITHOUT THE EXPRESSED WRITTEN CONSENT OF THE PROFESSIONAL OF RECORD.

Revisions:

Issue	Date	Description
1	02/20/08	CB 1
2	05/10/08	CB 5 REV. DIMS.

Owner:
THE EVERETT JEWISH LIFE CENTER IN CHAUTAUQUA

Project #/Address:
36 Massey Ave. Chautauqua Institution Chautauqua, NY 14722

Project North

Orig. Drawing Scale: 1/4"=1'-0"
 Caution: This drawing may have been enlarged or reduced. Verify with graphic scale when available.

Graphic Scale:
 0 2' 4'

Date: 10/10/07
 Drawn By: RMS/GWS
 Checked By: RMS/GWS
 Project #: 07109
 Drawing Title: **FIRST FLOOR PLAN**
 Sheet No.: **A102**